



PS  $6 \times 4$  MM. = 1 PCS.

RD 1.25 - 1.5 MM.



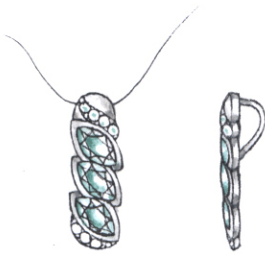
MQ  $6 \times 3$  MM. = 3 PCS.

RD 2 MM. = 5 PCS.



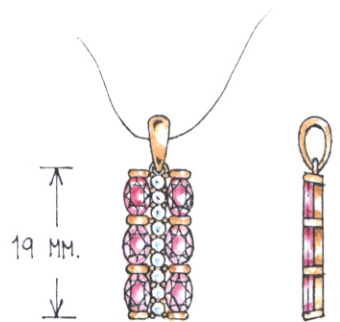
MQ  $5 \times 2.5$  MM. = 4 PCS.

RD 1.8 - 2 MM.



MQ  $7 \times 3.5$  MM. = 3 PCS.

RD 1.5 - 1.8 MM.



OV  $5 \times 3$  MM. = 6 PCS.

RD 2 MM. = 9 PCS.